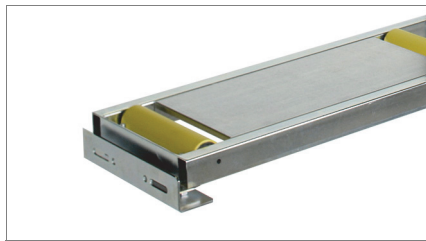

**emmegi**

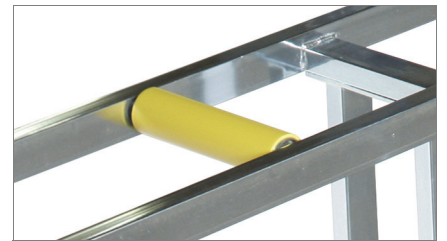
en #2

Aluminium  
 Steel  
 Pvc



Side view

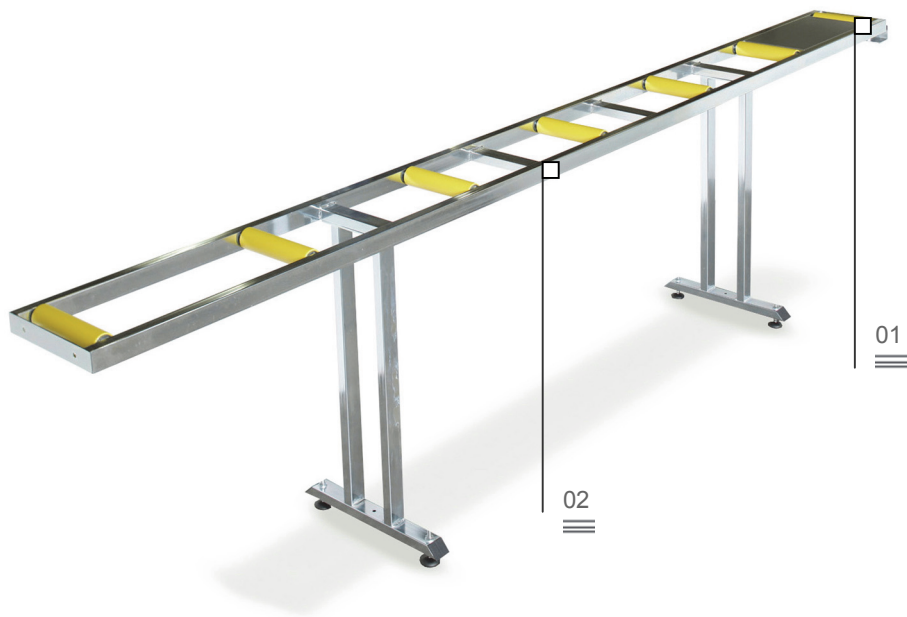
01



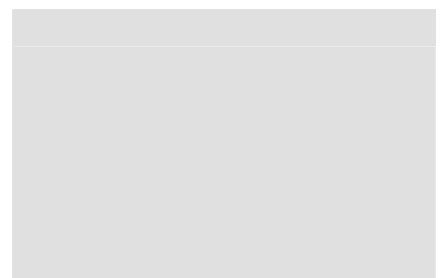
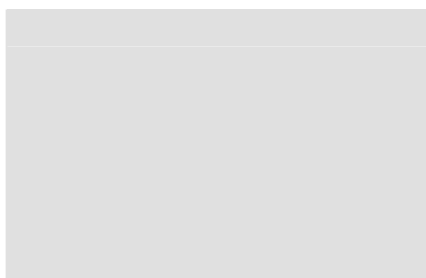
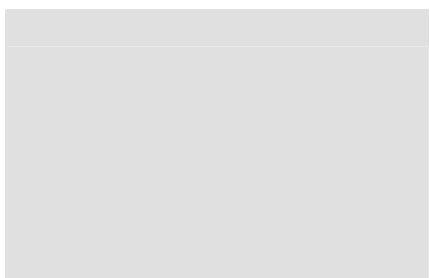
Roll

02

**Loading roller conveyor**  
**Roller conveyor**



Tubular steel construction with adjustable mounting feet: with rolls size 240 mm, roller conveyor length is 3500 mm; with rolls size 440 mm, roller conveyor length is 4000 mm.



# Loading roller conveyor

---

Roller conveyor

---

## 01

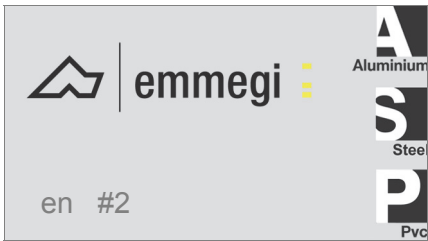
**Side view**

Accurate and rigid connection to the cutting machine is via a special steel bracket.

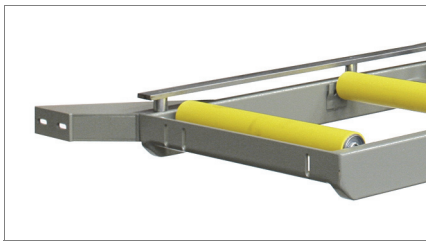
## 02

**Roll**

PVC covered steel rolls, size 240/440 mm, allow efficient conveying of the profile, with no risk of surface damage.



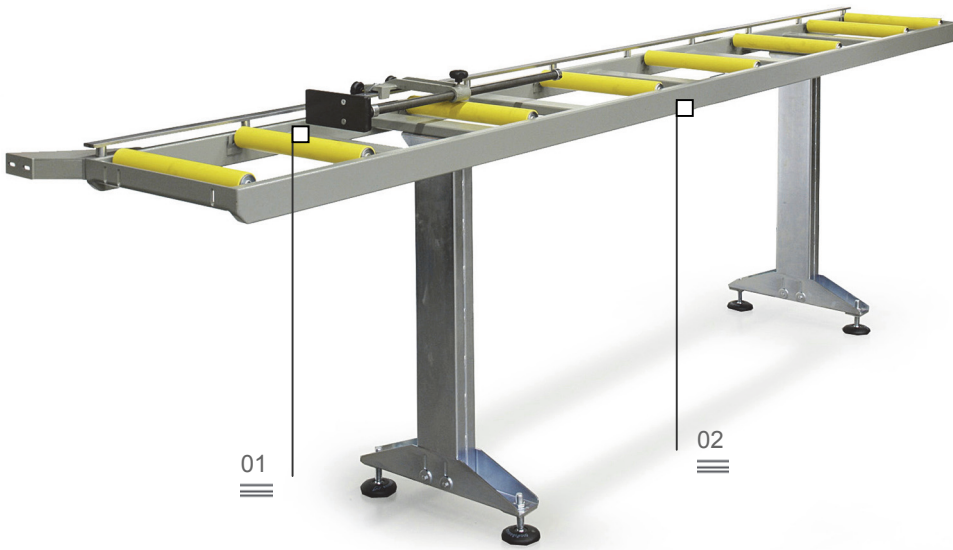
**Unloading roller conveyor**  
 Roller conveyor



Side view 01



Roll 02



Tubular steel construction with adjustable mounting feet and PVC covered steel rolls. In the version with rolls size 240 mm, roller conveyor length is 3500 mm; with rolls size 440 mm, roller conveyor length is 4000 mm.

Stop 03



The images are only given for illustrative purposes

# Unloading roller conveyor

---

Roller conveyor

---

**01**

**Side view**

---

Accurate and rigid connection to the cutting machine is via a special steel bracket

**02**

**Roll**

---

PVC covered steel rolls, size 240/440 mm, allow efficient conveying of the profile, with no risk of surface damage.

**03**

**Stop**

---

Based on a slide running on a ball bushing actuated by a mechanical drive mechanism. As such system refers to the centre of the blade, it allows determining the workpiece length.