



Copia 324

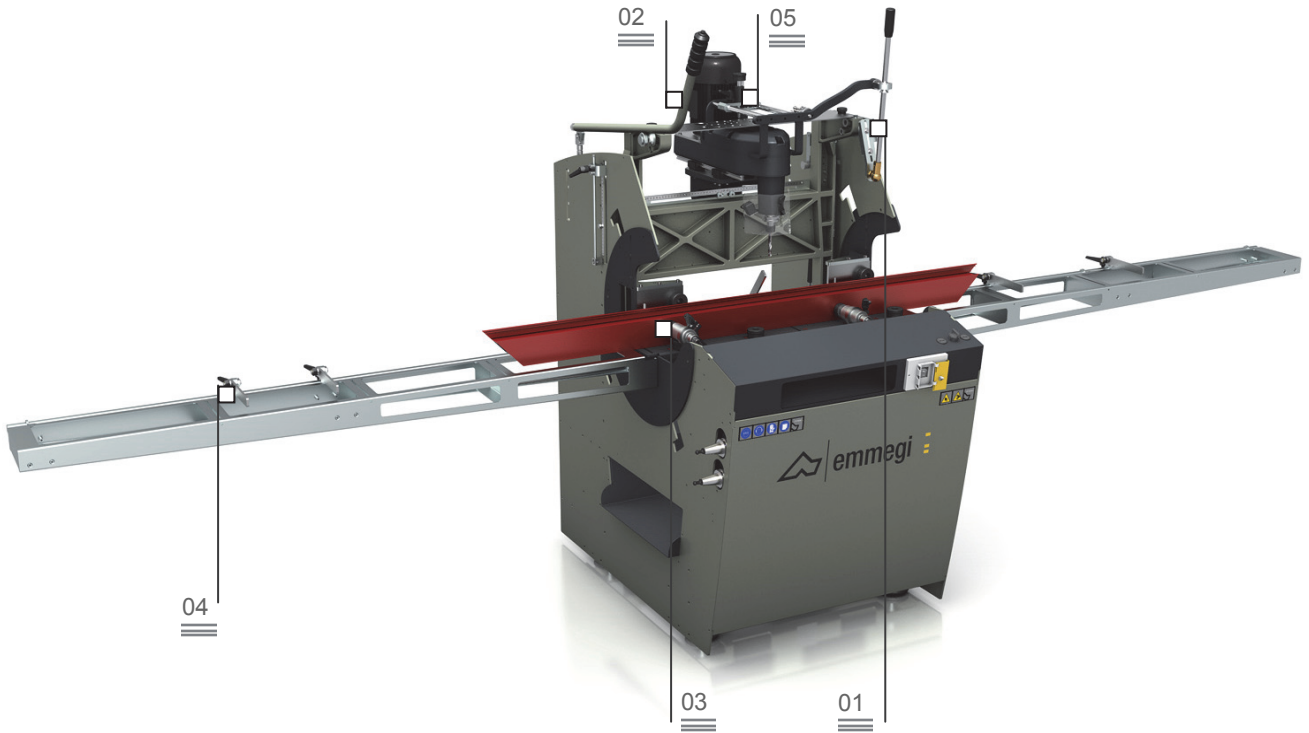
Manual copy router



Indirect head translation lever 01

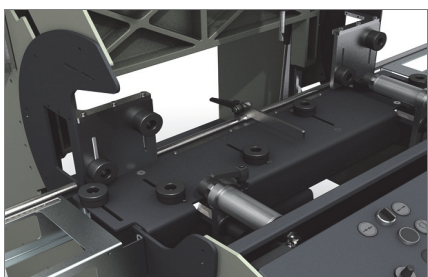


Control joystick 02

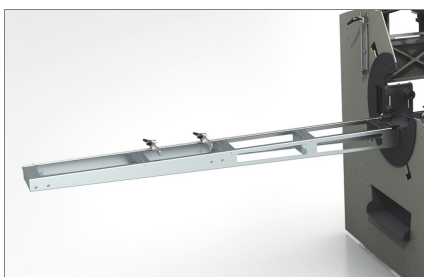


Single-head manual-control copy router with pneumatic locking system and head traversing movement controlled by an indirect lever. Through machining operations on aluminium can be performed without turning the workpiece. Scratch-proof work table. Pneumatic sensor with command on the handle.

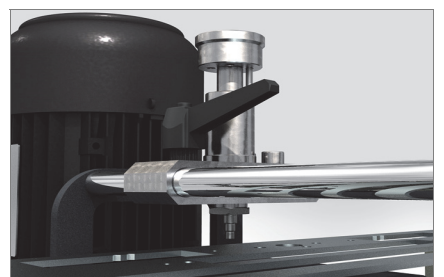
Clamps 03



Stops and roller conveyors 04



4-diameter sensor 05



Copia 324

Manual copy router

01

Indirect head translation lever

The tool travels along the horizontal plane manually using a lever that minimises the strength required by the operator. The height of the handle is adjustable for a practical and ergonomic use.

02

Control joystick

The lever allows the vertical movement of the milling unit. A motor starter button is found on the joystick.

03

Clamps

The machine has manually adjustable pneumatically controlled horizontal clamps that guarantee the profile blocks correctly in the machine. For better profiles blocking when required, a couple of vertical pneumatic clamps is available as an optional.

04

Stops and roller conveyors

The roller conveyors positioned on the right and left support very long profiles being processed. Moreover, a system of manually-adjustable stops, also on the right and left, allows the workpiece to be positioned properly in the machine, taking it to the work area.

05

Sensor with 4 diameters

The mechanical sensor has 4 positions, creating 4 different tool diameters. Positioned in line with the preset mask, thereby allowing safe and precise processing.

FEATURES	● included	○ optional
Motor with inverter (kW)		1.1
Tool speed (revs/min)		8000
Travel (X-Y-Z) (mm)		380 – 150 – 250
Clamp capacity at 90° (mm)		200 x 200
Tool connector with collet		ER 16
Tool connector with collet max (mm)		Ø = 10
Max tool length (mm)		95
Pair of horizontal pneumatic clamps	●	
Pair of vertical pneumatic clamps		○
PVC adjustable clamp jaws	●	
Single cutter mill (mm)		Ø = 5 – 10
Mill-holder collet complete with ring nut (mm)		Ø = 5/6 – 9/10
Local tool protection	●	
Sensor tip with 4 diameters (mm)		Ø = 5 – 6 – 8 – 10
Indirect head translation lever	●	
Template with standard shapes	●	
Spray-mist lubrication system with water and oil emulsion	●	
Right and Left profile-supporting shelves with 4 excludable stops	●	
Central stop that slides along linear guides	●	
Tool holder storage built into the base, holds 4 tools	●	
Head movement along precision linear guides	●	
Stop devices along the travel of axes X, Y, Z, with precision metric rod	●	
Three-spindle drilling unit for cremone bolt processing (depending on the model)	●	